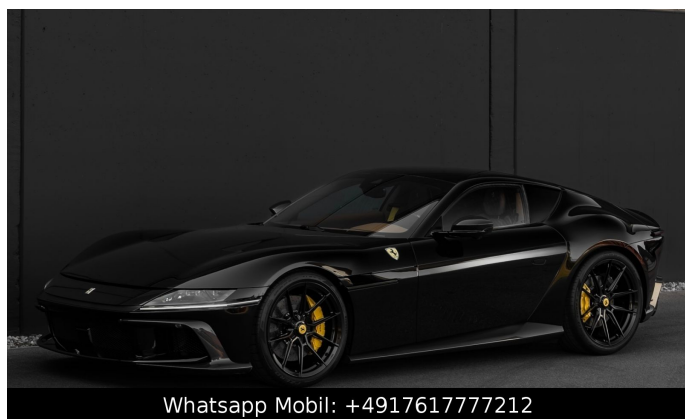


Ferrari 12CILINDRI NOVITEC EINZELSTÜCK CARBON

FULLOPT!

Details



Preis **599.800 €**
19% MwSt.

Hersteller	Ferrari
Modell	12Cilindri
Leistung	611 kW / 831 PS
Leistung	831
Kilometerstand	10 km
Kraftstoff	Benzin
Anzahl Sitze	2
Getriebe	Automatik
Farbe	Schwarz
Innenbereich	Vollleder

Ausstattung

- Leichtmetallfelgen
- Elektr. Wegfahrsperr
- ESP
- Garantie
- Sportsitze
- Sportpaket
- Freisprecheinrichtung
- Traktionskontrolle
- Notbremsassistent
- Berganfahrassistent
- Reifendruckkontrolle
- Sprachsteuerung
- Blendfreies Fernlicht
- Apple CarPlay
- Musikstreaming integriert
- Zentralverriegelung
- Servolenkung
- Navigationssystem
- Regensensor
- Elektr. Seitenspiegel
- Bluetooth
- Multifunktionslenkrad
- Nichtraucher-Fahrzeug
- Alarmanlage
- Lederlenkrad
- Schaltwippen
- Touchscreen
- Abstandswarner
- Android Auto
- Innenspiegel autom. abblendend
- Elektr. Fensterheber
- ABS
- Luftfederung
- Panorama-Dach
- Sportfahrwerk
- Bordcomputer
- Lichtsensor
- Start/Stop-Automatik
- Armlehne
- Notrufsystem
- Soundsystem
- Sommerreifen
- Ambiente-Beleuchtung
- Volldigitales Kombiinstrument
- Adaptives Fahrwerk

Kontakt

Showroom
Wasserburger Landstr. 282
81827 München

Tel.:
E-Mail: info@medusa-sportwagen.de

Ferrari 12CILINDRI NOVITEC EINZELSTÜCK CARBON

FULLOPT!

- Abgedunkelte Scheiben
- Elektr. Seitenspiegel anklappbar
- Parkensoren vorne
- Parkensoren hinten
- 360° Kamera
- 2-Zonen-Klimaautomatik
- Abstandstempomat
- Radio DAB
- LED-Tagfahrlicht
- LED-Scheinwerfer
- Kurvenlicht

Fahrzeugbeschreibung

Ferrari 12Cilindri - Novitec Conversion Exclusive Specification Unique piece !!!

This exceptional Ferrari 12Cilindri has been professionally refined with a full Novitec upgrade package, combining breathtaking performance with an even more striking appearance. The vehicle presents itself in outstanding condition and offers a unique opportunity to own a highly exclusive configuration of Ferrari's latest V12 grand tourer.

The car features premium Novitec 21-inch high-gloss black wheels that perfectly complement the elegant and aggressive design of the 12Cilindri. The stance is further enhanced by a Novitec lowering setup, giving the vehicle a more dynamic and sporty presence while maintaining everyday drivability.

complete Novitec exhaust system has been installed, including Novitec performance mufflers with an X-pipe configuration. This setup significantly enhances the sound profile of the naturally aspirated V12 engine, delivering a deeper, more emotional and race-inspired exhaust note while optimizing exhaust flow.

For an even more distinctive look, the vehicle is equipped with a carbon fiber hood flip/vent element, adding a motorsport-inspired aesthetic and emphasizing the car's performance character.

highlights:

- ? Novitec 21" high-gloss black wheels
- ? Novitec lowering system for a sportier stance
- ? Complete Novitec exhaust system
- ? Novitec performance mufflers with X-Pipe
- ? Carbon fiber hood flip/vent element
- ? Unique and highly exclusive configuration

Ferrari 12Cilindri combines the purity of Ferrari's legendary V12 engine with the engineering expertise and design refinement of Novitec, making it an extraordinary collector's vehicle and a true statement on the road. Serious inquiries only.

EXTERIOR

- ? Nero DS 1250 paintwork (Black)
- ? Nero DS 1250 two-tone body painting
- ? "Scuderia Ferrari" shields
- ? Rims painted in glossy black
- ? Titanium wheel bolts
- ? Yellow brake calipers
- ? Carbon fibre front spoiler

Kontakt

Showroom
Wasserburger Landstr. 282
81827 München

Tel.:
E-Mail: info@medusa-sportwagen.de

Ferrari 12CILINDRI NOVITEC EINZELSTÜCK CARBON

FULLOPT!

? Carbon fibre underdoor cover

? Carbon fibre outer mirrors

? Rear diffuser in carbon fibre

? Panoramic roof

? Dark laminated rear glass

? Black ceramic exhaust pipes

INTERIOR

? Cuoio 4609 leather interior

? Cuoio 4609 dual colour leather trim

? Cuoio 4609 upper part in coloured leather

? Custom Alcantara Nera 9441 carpets

? Coloured mats with logo

? Daytona racing seats (size L)

? Yellow coloured safety belts

? Special stitching in Nocciola 0261

? Yellow horse stitched on headrest

? Alcantara Cuoio 4017 inserts

? Cuoio 4609 coloured steering wheel

? Carbon fibre steering wheel with LEDs

? Carbon fibre instrument cluster

? Carbon fibre upper tunnel trim

? Carbon fibre door panels

EQUIPMENT & TECHNOLOGY

? Front radar with Adaptive Cruise Control

? Surround view camera system

? Rear radar

? Suspension lifter

? Active Matrix LED headlights

? MyFerrari Connect activated

? Smartphone connection

? Wireless smartphone charger

? Passenger display

? Electric tailgate

? Emergency call system

Fahrzeugbilder

Kontakt

Showroom
Wasserburger Landstr. 282
81827 München

Tel.:
E-Mail: info@medusa-sportwagen.de

Ferrari 12CILINDRI NOVITEC EINZELSTÜCK CARBON

FULLOPT!



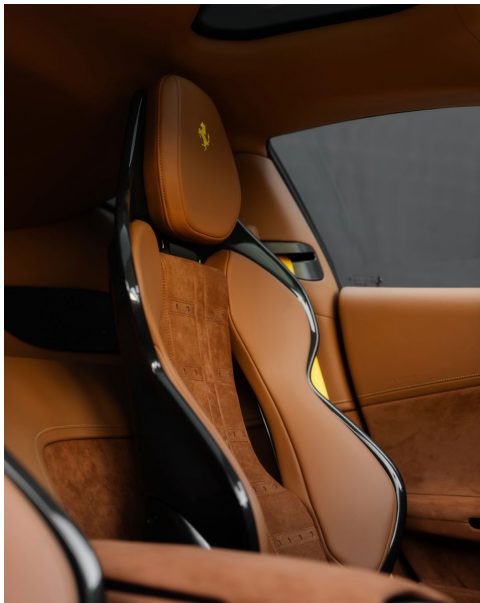
Kontakt

Showroom
Wasserburger Landstr. 282
81827 München

Tel.:
E-Mail: info@medusa-sportwagen.de

Ferrari 12CILINDRI NOVITEC EINZELSTÜCK CARBON

FULLOPT!



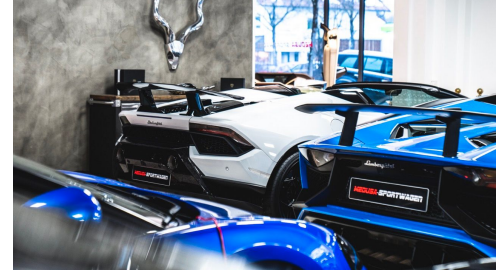
Kontakt

Showroom
Wasserburger Landstr. 282
81827 München

Tel.:
E-Mail: info@medusa-sportwagen.de

Ferrari 12CILINDRI NOVITEC EINZELSTÜCK CARBON

FULLOPT!



Kontakt

Showroom
Wasserburger Landstr. 282
81827 München

Tel.:
E-Mail: info@medusa-sportwagen.de

Ferrari 12CILINDRI NOVITEC EINZELSTÜCK CARBON

FULLOPT!

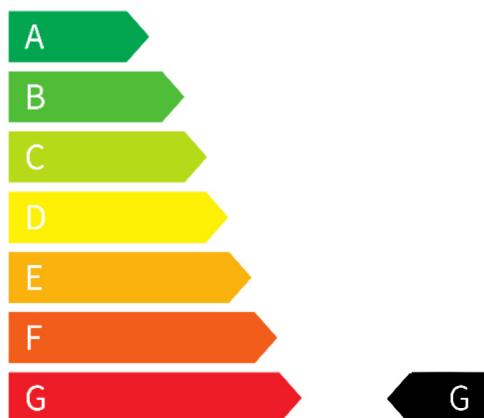
Verbrauch & Umwelt

Kraftstoffverbrauch (kombiniert): 15,5 l/100km

CO₂-Emissionen (kombiniert): 353 g/km

CO₂-Klasse: G

CO₂ - Klasse kombiniert



Kontakt

Showroom
Wasserburger Landstr. 282
81827 München

Tel.:
E-Mail: info@medusa-sportwagen.de